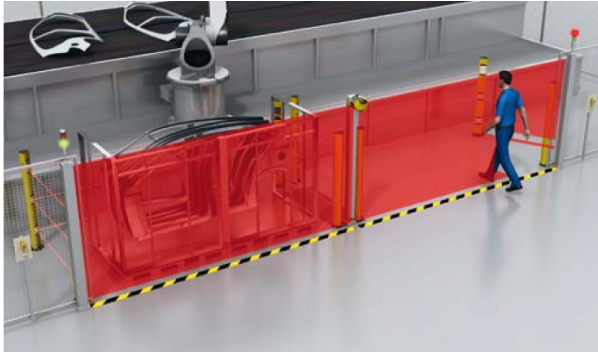


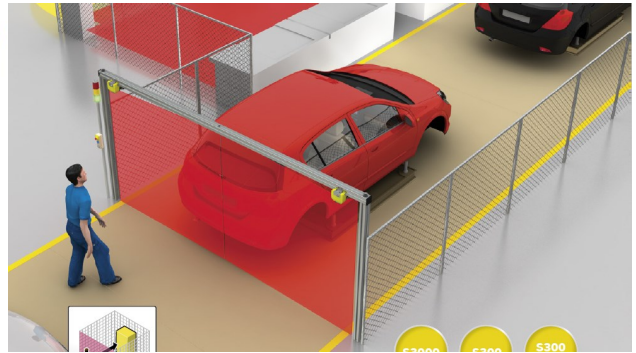
# APPLICATION BREAKDOWN:

## Using Safety Area Scanners as Light Curtains

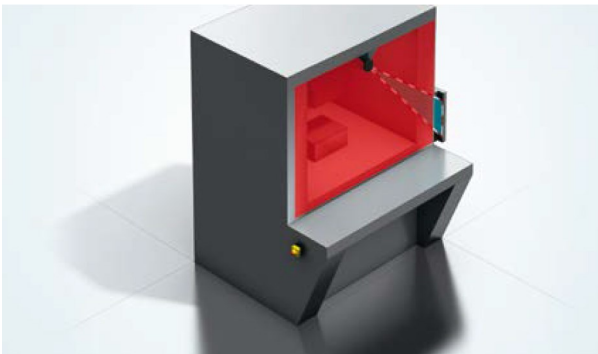
In spite of the well-established success of safety light curtains, they do have a major drawback: mounting space. Many applications requiring safety curtains are also high-traffic areas. The sender and receiver are frequently damaged by forklift traffic or by the infeed of product into the system. Safety scanners can be mounted above or below the traffic area and still achieve the highest safety rating. Furthermore, multiple fields can be programmed, increasing application flexibility.



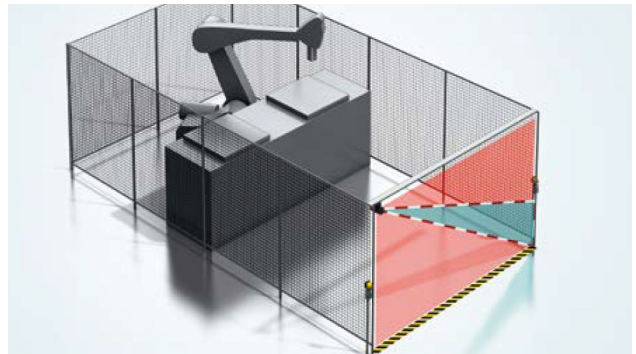
Multiple-zone access to work cells



Paint Booth Entry



Ultrasonic Weld Cell Guarding



Robotic Cell Guarding



Entry Exit Applications

