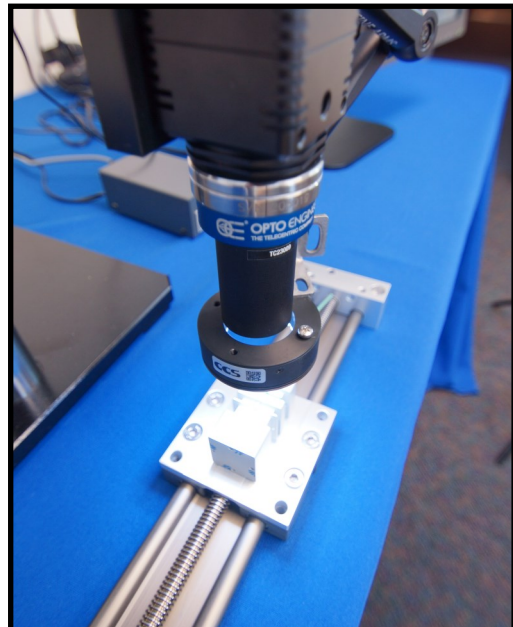
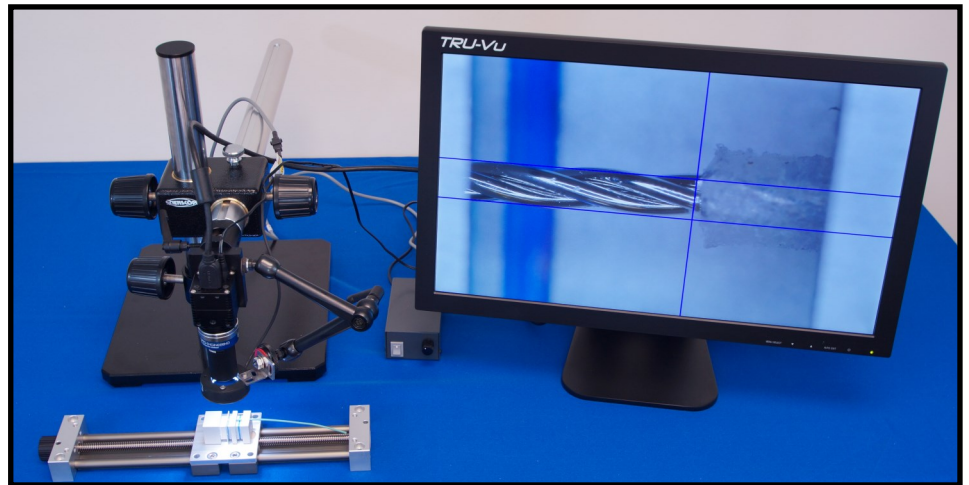


# APPLICATION BREAKDOWN:

## Video Microscope

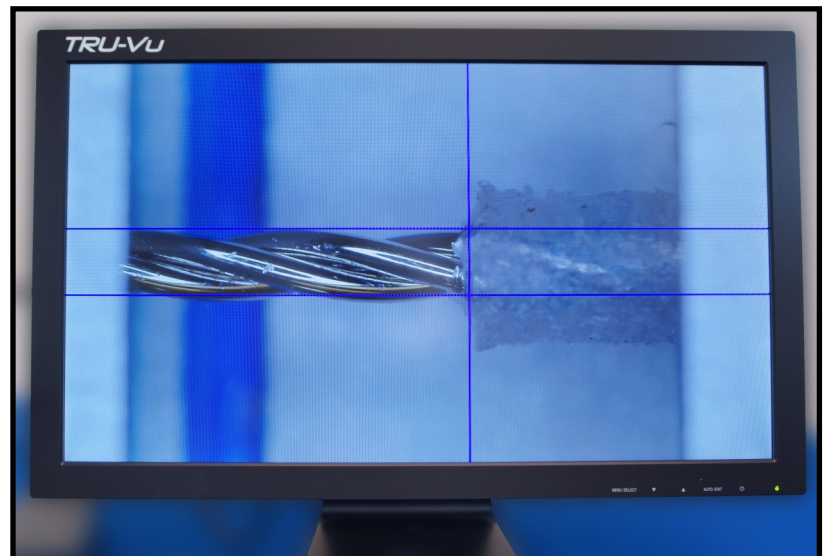


A major medical device manufacturer wanted to solve a long-standing problem in their industry—eye strain from extensive microscope usage. The company trusted Sensors Integration's to solve their application. Constant microscope use is not only fatiguing for employees, but it is also an inefficiency in the production process. This customer wanted to enhance their process by using cameras to display a magnified image.



Sensors Integration designed a system that would utilize a camera and monitor to provide a high definition image that was simple to focus, easy on the eyes and offered a significant cost savings over the price of a new microscope. Sensors Integration has experience integrating all of the major vision and lighting vendors. For this application, Sensors Integration chose a Sentech HD color camera, Opto Engineering telecentric lens, CCS America ring light and Tru-Vu 21.5" monitor; components are always chosen on an application-specific basis. The Sentech camera uses a simple pendant to be able to adjust the camera parameters as well as make edits to the on-screen graphics.

After using the system on a variety of different medical devices including catheters, needles and tubing to test the resolution, Sensors Integration invited the customer to test the system. After the customer successfully tested the video microscope, the system was widely adopted and implemented in a range of medical device manufacturing applications.



If you have a complex application or are in need of product consultation, call the experts at Sensors Integration.

Solving Applications since 1977.



507 Kelsey Street • Delano, MN 55328  
Phone 763-972-1040 Fax 763-972-1041  
Toll Free 888-920-0939  
Sensorsintegration.com